



KNOWLEDGE ORGANISER: Science- Habitats Year 4 Summer 1

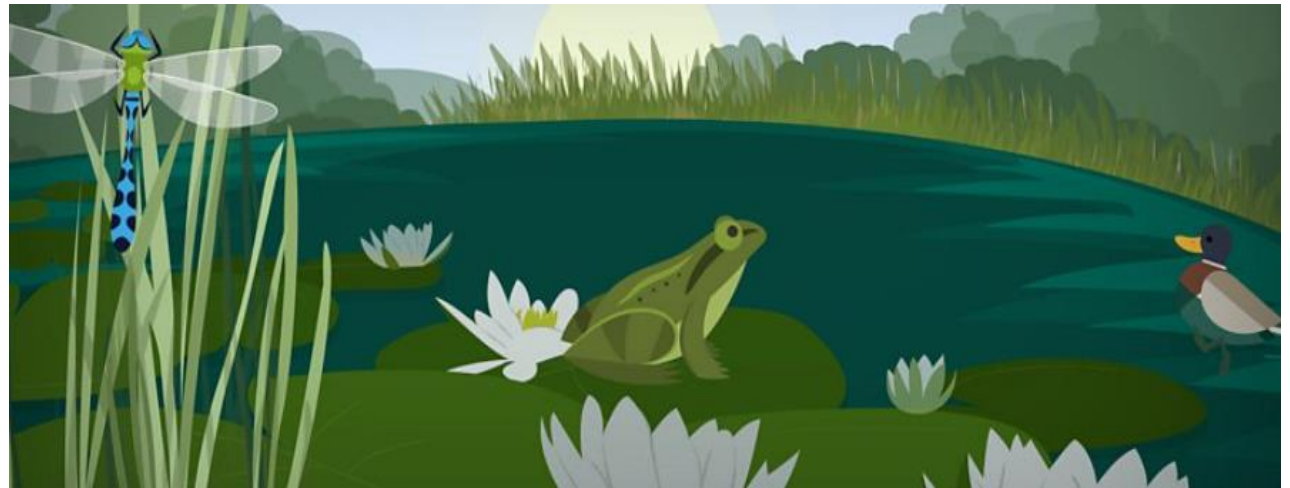
Key Vocabulary	
Habitat	An area where animals and plants live.
Rural	An area of the country with few buildings.
Urban	An area with lots of buildings and people.
Classification key	A way of separating living things using closed questions.
Biodiversity	The variety of living things in a habitat.
Deforestation	Clearing trees from a woodland area by humans.
Nature Reserve	An area where living things are protected from human activity.
Rewilding	A method of increasing biodiversity by reducing human activity.

Learning Intention: To understand how plant and animal habitats function.

- Understand how to collect data relating to habitats, analyse it and make conclusions.
- Understand how plant and animal habitats are similar and different and be able to use classifications keys for both.
- Understand the human impact on habitats and sustainability.

Key Knowledge

- Learn about plant and animal habitats. – Understand similarities and differences between the two. – Learn how to read and create classification keys.- Learn how to collect data relating to habitats . – Understand how to analyse this data and draw conclusions from it. – Explore urban and rural habitats. – Learn about the human impact on habitats. Explore sustainability and environment issues, which are highly relevant to modern society.



Resources



Websites

Textbooks

Reading Links



- ✓ [Habitat \(nationalgeographic.org\)](https://www.nationalgeographic.org)
- ✓ [Britain's habitats in a nutshell | Kew](#)
- ✓ [Living things and their habitats - KS2 Science - BBC Bitesize](#)