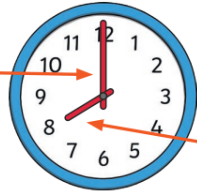




KNOWLEDGE ORGANISER: Maths: Time Year 1 Block 6

Telling the Time

The long hand is the minute hand.



The short hand is the hour hand.

The time is 8 o'clock.

Telling the Time to the Half Hour

At half past, the **minute hand** is half way round the clock pointing to the 6.

half past 1



half past 11



half past 7



The hour hand will be halfway between one hour and the next.

Telling the Time to the Hour

At the hour, the **minute hand** points to 12.

3 o'clock



6 o'clock



9 o'clock



The **hour hand** points to the hour.

Before and After

before



after



first



next



finally

First, I brush my teeth.

Next, I look at a book.

Finally, I go to sleep.

I brush my teeth **before** I look at a book.

I go to sleep **after** I look at a book.

Days of the Week

Monday

Tuesday

Wednesday

Thursday

Friday

Saturday

Sunday

Months of the Year

January

February

March

April

May

June

July

August

September

October

November

December

Comparing Time

A is faster than a .

A is slower than a .



4 o'clock is **earlier** than half past 4.



Half past 4 is **later** than 4 o'clock.