



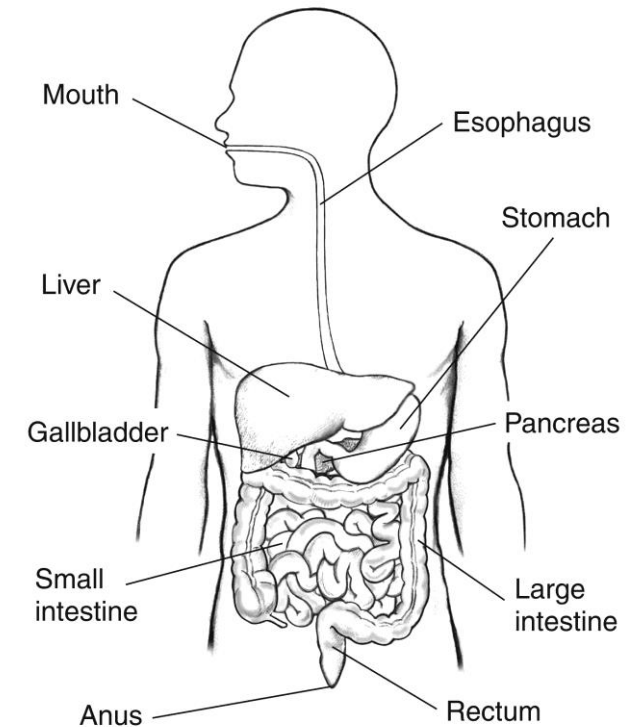
# KNOWLEDGE ORGANISER: Science- Digestion Year 4 Block 4

## Key Vocabulary

<b>carnivore</b>	Animal which feeds on meat
<b>herbivore</b>	Animal which feeds on plants
<b>omnivore</b>	Animal which feeds on both plants and meat
<b>oesophagus</b>	Tube which connects the throat to the stomach
<b>stomach</b>	Organ in the body which begins digestion
<b>Small intestine</b>	Organ which absorbs nutrients from food
<b>Large intestine</b>	Organ which stores food and absorbs water
<b>tooth decay</b>	When teeth rot due to damage to the enamel
<b>enamel</b>	Hard outer coating on teeth
<b>molars</b>	Teeth for grinding
<b>incisors</b>	Teeth for cutting
<b>canines</b>	Teeth for tearing

## Key Knowledge

- Compare the teeth of carnivores, herbivores and omnivores to understand how an animals diet influences the structure of its teeth
- Name the 4 main types of teeth in the mouth and their functions (incisor, canine, premolar, molar)
- Describe the different layers of the tooth and why they are important.
- Describe how bacteria in the mouth feed on sugar and contribute to plaque build-up and decay.
- Carry out an investigation to see how different liquids can damage teeth (eggshell experiment)
- Be able to describe the route food takes as it goes through the digestive system (including the roles of different body parts and liquids)
- Carry out a practical demonstration to explain how digestion happens.



## Big Debate

Animals and humans need the same types of teeth.

## Resources



### Websites

- ✓ [Digestive health - NHS \(www.nhs.uk\)](http://www.nhs.uk)
- ✓ [What is the digestive system? - BBC Bitesize](http://www.bbc.com/bitesize)
- ✓ [The human digestive system - National Geographic Kids \(natgeokids.com\)](http://www.natgeokids.com)

### Textbooks

### Reading Links

